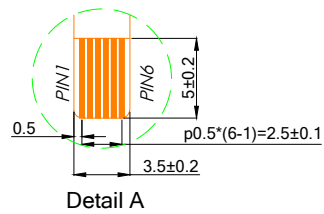
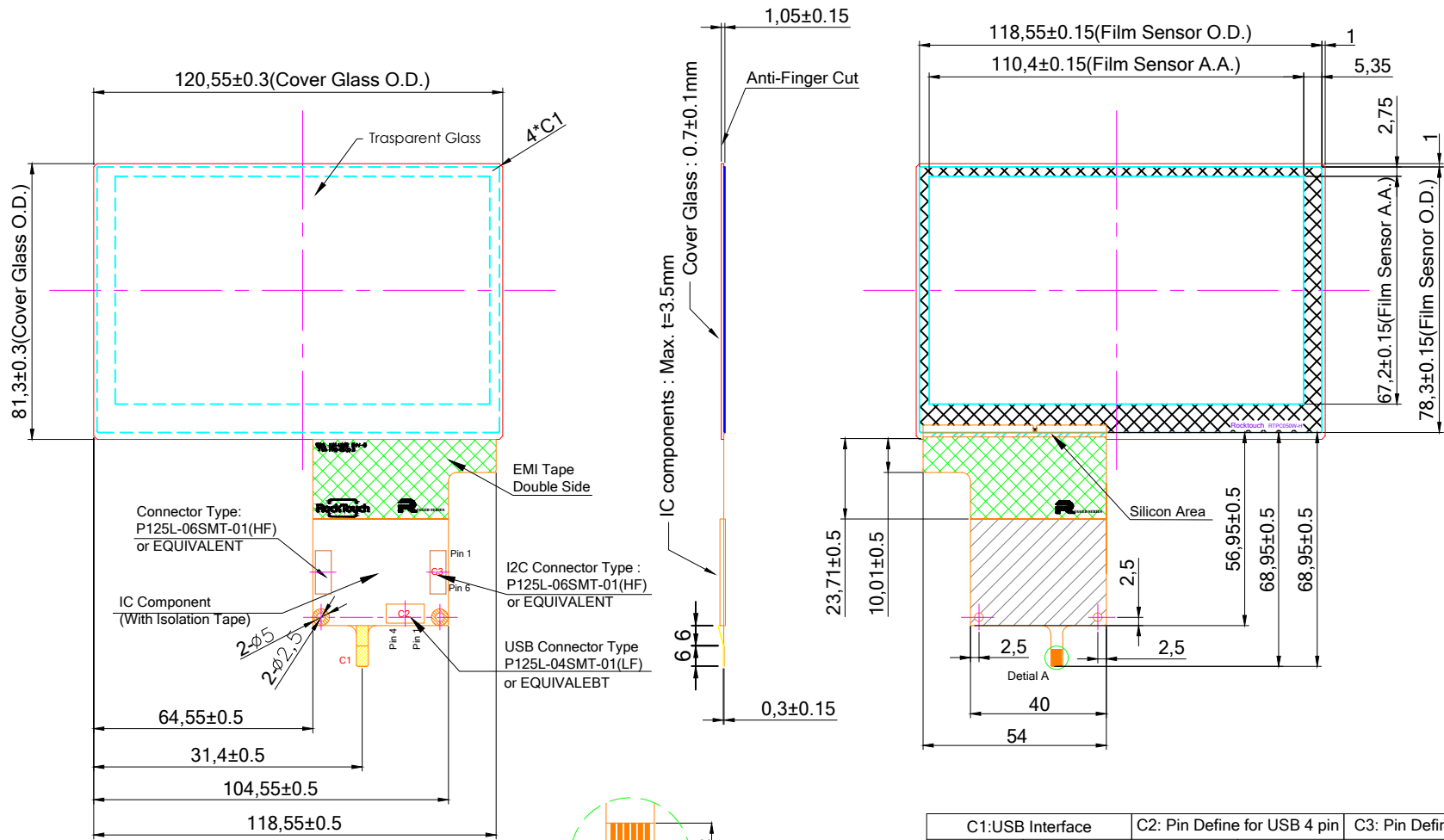


Front VIEW

Back VIEW



- Spec:
- 1. General O.D. Tolerance : ±0.3
 - 2. Border Type : Matte
 - 3. Glass Type : C.S.
 - 4. Surface Treatment : None
 - 5. Background Printing : None
 - 6. Logo Printing : None
 - 7. Transmittance Level : >85%
 - 8. Important Notes :

- Note:
- A. Distance between LCD and Touch must be at least 1 mm otherwise touch will not work correctly
 - B. If customer put a front cover lens all around he need to use at least 2 mm Thick gasket between touch and metal frame
 - C. refer to the integration guide to avoid any integration noise issue
 - D. before mass production customer must provide machine for final firmware tuning, or we must test in remote and tune final firmware

C1:USB Interface		C2: Pin Define for USB 4 pin		C3: Pin Define for I2C 6 pin	
Pin 01	VDD(5V)	Pin 01	GND	Pin 01	GND
Pin 02	D-	Pin 02	D-	Pin 02	SDA
Pin 03	D+	Pin 03	D+	Pin 03	SCL
Pin 04	GND	Pin 04	VDD	Pin 04	VDD(5V)
Pin 05	RST			Pin 05	INT
Pin 06	NC			Pin 06	RST

Date	Drawing Number
------	----------------

Customer Approval		Part Number		RTPC050W-R07001-C	
Date	Rev	Date	Person	Description	
Company					
Name					
Signature					
v1	20190904	Jeff	Change COF Shape as Our Standard Version		
			Date	Design By	Date
			First Drawing	20190903	Jeff
			Check By	Date	Approved By