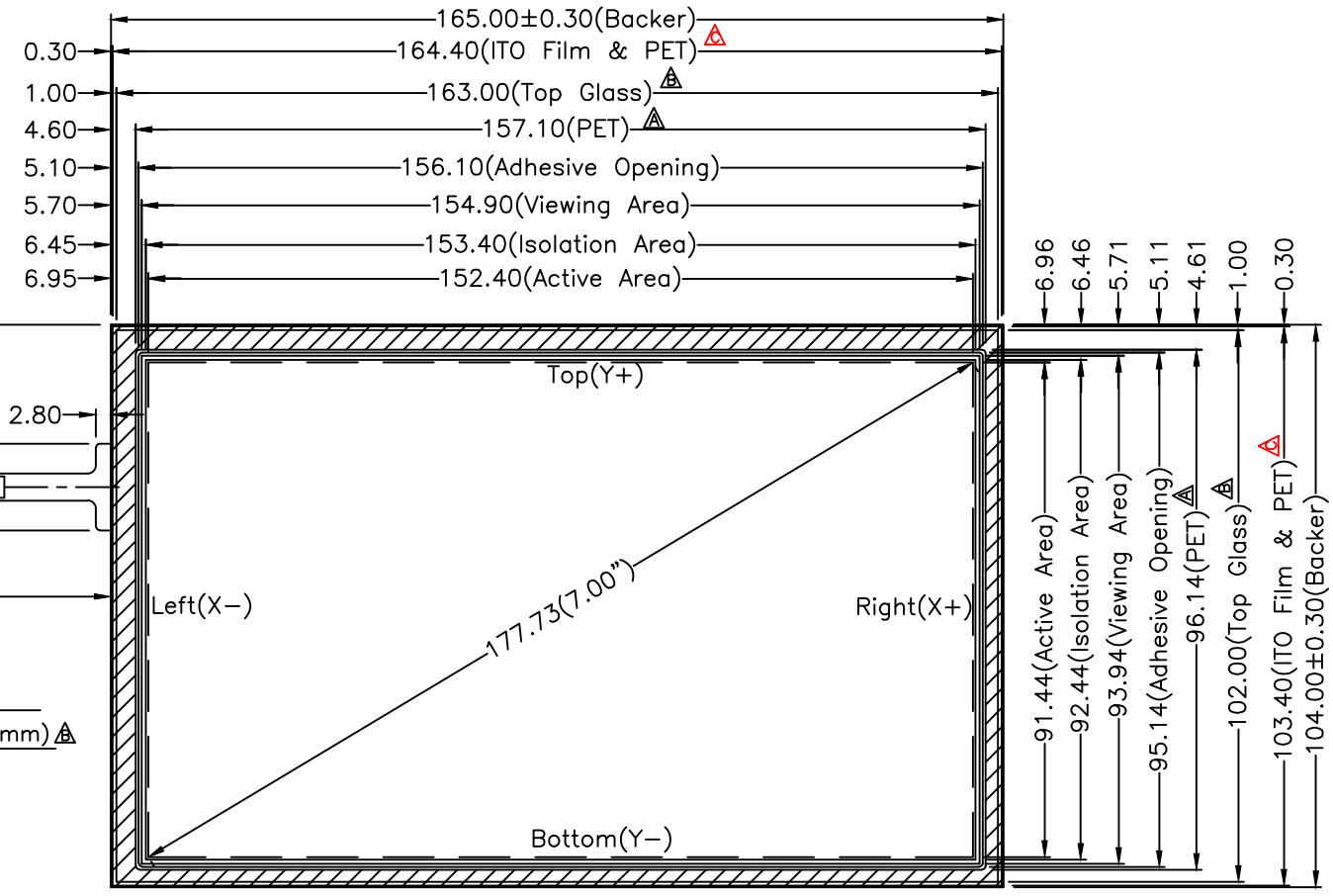
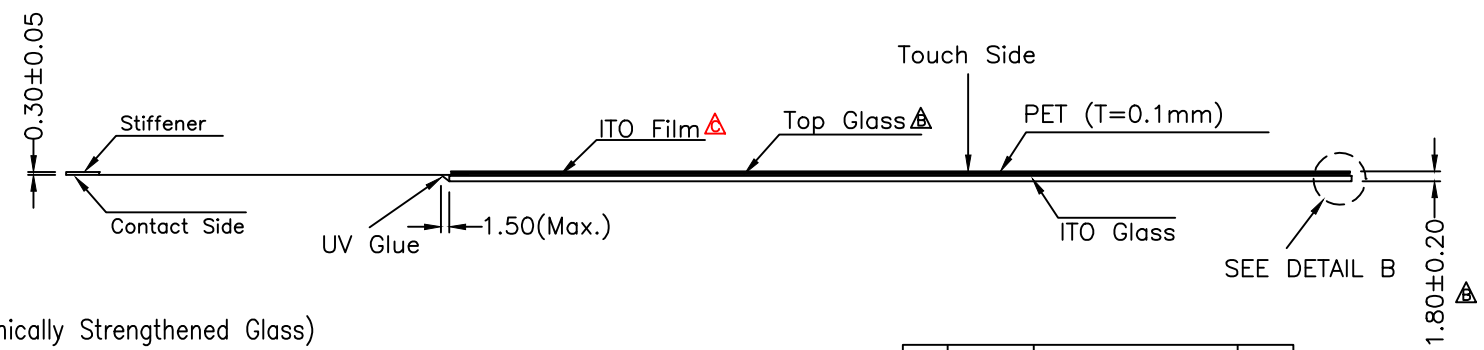
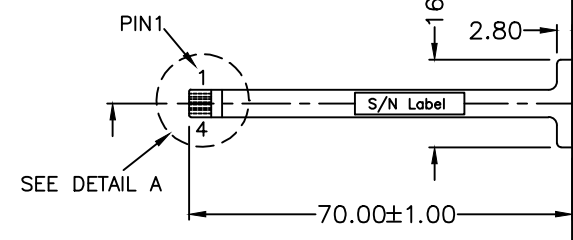
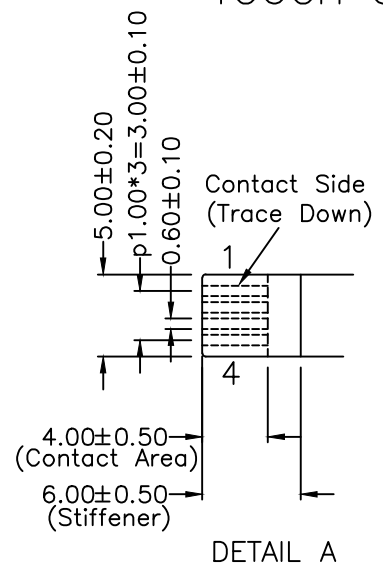


TOUCH SIDE VIEW

Pin #	Assignment
1	Right(X+)
2	Top(Y+)
3	Left(X-)
4	Bottom(Y-)



NOTES:

1. ITO GLASS THICKNESS : 1.10mm (Chemically Strengthened Glass)
 2. OVERALL THICKNESS : 1.8±0.20mm
 3. CONNECTOR AND PINOUT AS INDICATED
 4. TOP GLASS SURFACE TYPE : CLEAR
 5. LAYER TO LAYER ASSEMBLY TOLERANCE : ±0.50mm
 6. TAIL TYPE : IMMERSION GOLD PLATED FPC, ZIF
 7. OTHER SPEC : SEE APPROVAL SHEET
- * PLEASE REFER TO GFG INTEGRATION GUIDE BEFORE ASSEMBLY FOR SPECIAL ATTENTION.



NO.	DATE	DESCRIPTION	CHK
C.	JAN 22, 2013	MODIFY DOT & ITO FILM	Grace
B.	APR 07, 2011	MODIFY TOP GLASS	Grace
A.	JUN 29, 2010	MODIFY PET DIMENSIONS	Alex

CHIEF OF DESIGN	APPROVED	PROJECT MANAGER
	Grace	
ENGINEER		
DRAWN BY	Tim	DATE
SHT 1 OF 1	REV.	C

Apex Material Technology Corp.

TOLERANCES UNLESS SPECIFIED		MODEL NAME: 16013-00
.X	± 0.50	DWG NO : 16013-3-01
.XX	± 0.50	
.XXX	± 0.30	
ANGULAR	.	SCALE: 1:1 UNIT: mm