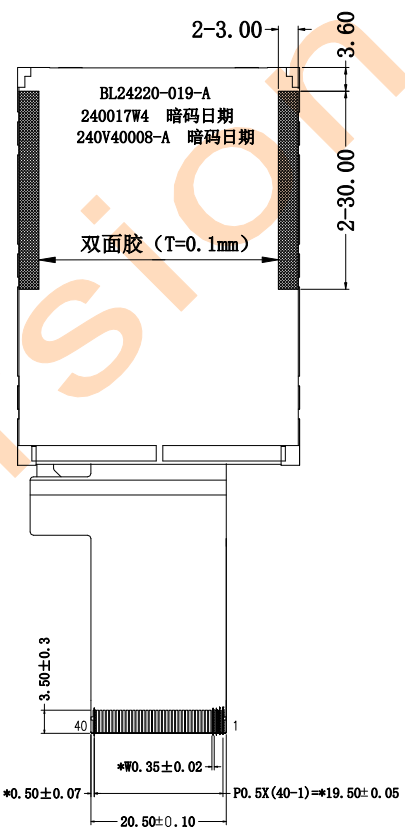
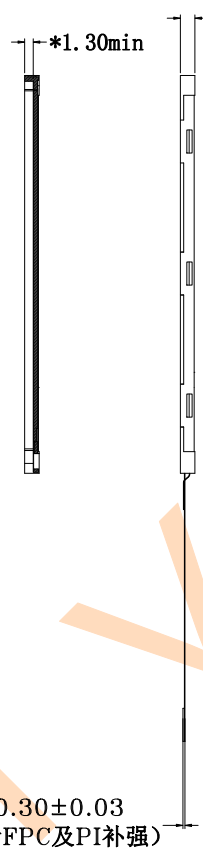
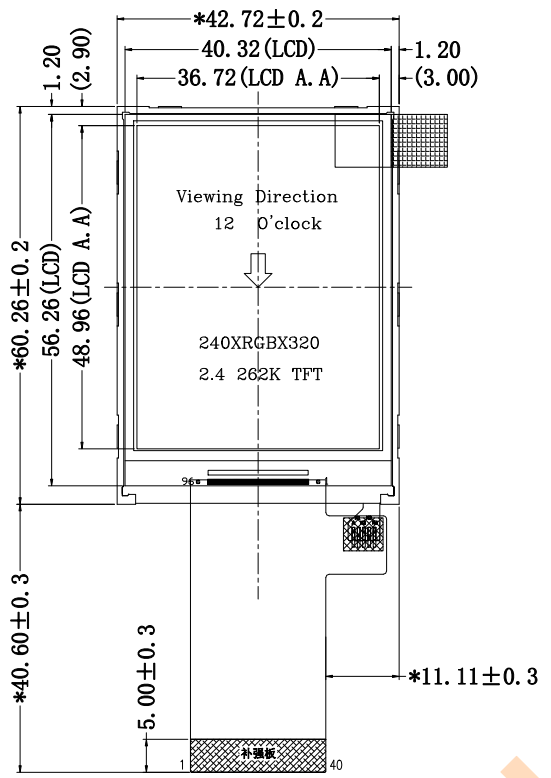


RoHS

NO.	CONTENT	DRAWN	DATE
△	First Issue	Wang Jin	17-06-12
△			
△			

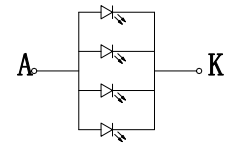


PIN	SYMBOL
1	SDI
2	SDO
3	IM0
4	IM1
5	IM2
6	IM3
7	RESET
8	VSYNC
9	HSYNC
10	COTCLK
11	DE
12	DB17
13	DB16
14	DB15
15	DB14
16	DB13
17	DB12
18	DB11
19	DB10
20	DB9
21	DB8
22	DB7
23	DB6
24	DB5
25	DB4
26	DB3
27	DB2
28	DB1
29	DB0
30	RDX
31	WRX
32	DCX
33	CSX
34	GND
35	VCI
36	IDVCC
37	NC
38	NC
39	K
40	A

FPC 展开出货

Notes:

1. Display Mode: 262K TFT/Normally White
2. Viewing Angle: 12 o'clock
3. LCD Driver IC: ILI9341V
4. Operating Temp: -10°C ~ +60°C
5. Storage Temp: -20°C ~ +70°C
6. *: Critical Dimension, (): Reference Dimension
7. Undefined Tolerance: ±0.2
8. Requirements on Environmental Protection: ROHS



LED CIRCUIT DIAGRAM
If=80mA; Vf=3.2±0.3V

深圳市福瑞达显示技术有限公司 Shenzhen Frida LCD Co., Ltd					Page	1/1
					DRAWING	Wang Jin
TITLE.	LCM	REV.	UNIT	SIZE		CHECK
MODEL.	FRD240V40008-A	v0	mm	A4		APPROVE