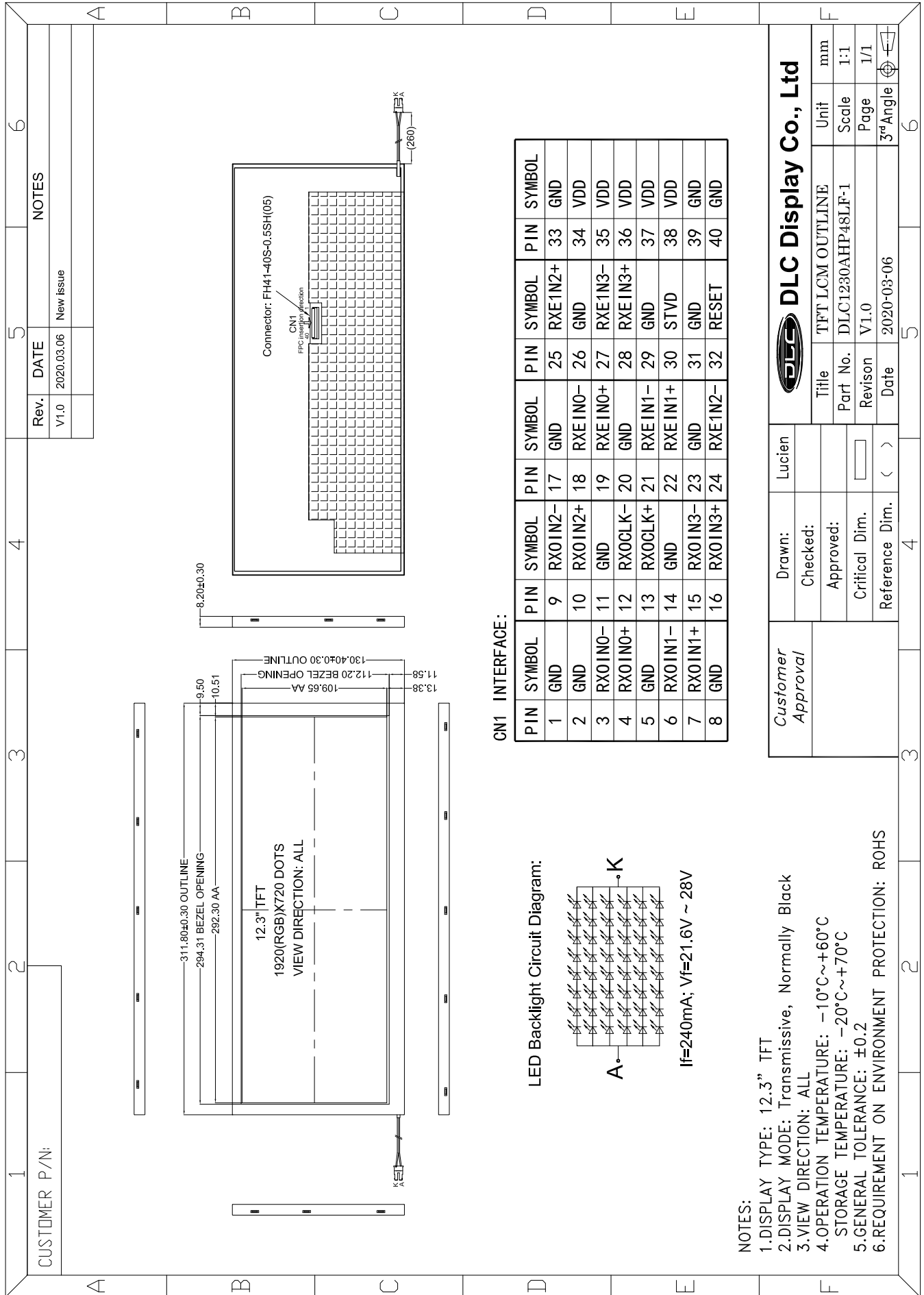


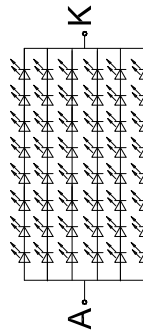
Outline Drawing



CN1 INTERFACE:

PIN	SYMBOL	PIN	SYMBOL	PIN	SYMBOL	PIN	SYMBOL	PIN	SYMBOL
1	GND	9	RX0IN2-	17	GND	25	RXE1N2+	33	GND
2	GND	10	RX0IN2+	18	RXEIN0-	26	GND	34	VDD
3	RX0IN0-	11	GND	19	RXEIN0+	27	RXEIN3-	35	VDD
4	RX0IN0+	12	RX0CLK-	20	GND	28	RXEIN3+	36	VDD
5	GND	13	RX0CLK+	21	RXEIN1-	29	GND	37	VDD
6	RX0IN1-	14	GND	22	RXEIN1+	30	STVD	38	VDD
7	RX0IN1+	15	RX0IN3-	23	GND	31	GND	39	GND
8	GND	16	RX0IN3+	24	RXEIN2-	32	RESET	40	GND

LED Backlight Circuit Diagram:



If=240mA; Vf=21.6V ~ 28V

NOTES:

- 1.DISPLAY TYPE: 12.3" TFT
- 2.DISPLAY MODE: Transmissive, Normally Black
- 3.VIEW DIRECTION: ALL
- 4.OPERATION TEMPERATURE: -10°C~+60°C
- STORAGE TEMPERATURE: -20°C~+70°C
- 5.GENERAL TOLERANCE: ±0.2
- 6.REQUIREMENT ON ENVIRONMENT PROTECTION: ROHS

Customer Approval	Drawn:	Lucien	DLC Display Co., Ltd			
	Checked:					
	Approved:		Title	TFT LCM OUTLINE	Unit	mm
	Critical Dim.		Part No.	DLC1230AHP48LF-1	Scale	1:1
	Reference Dim.	(>)	Revision	V1.0	Page	1/1
			Date	2020-03-06	3 rd Angle	