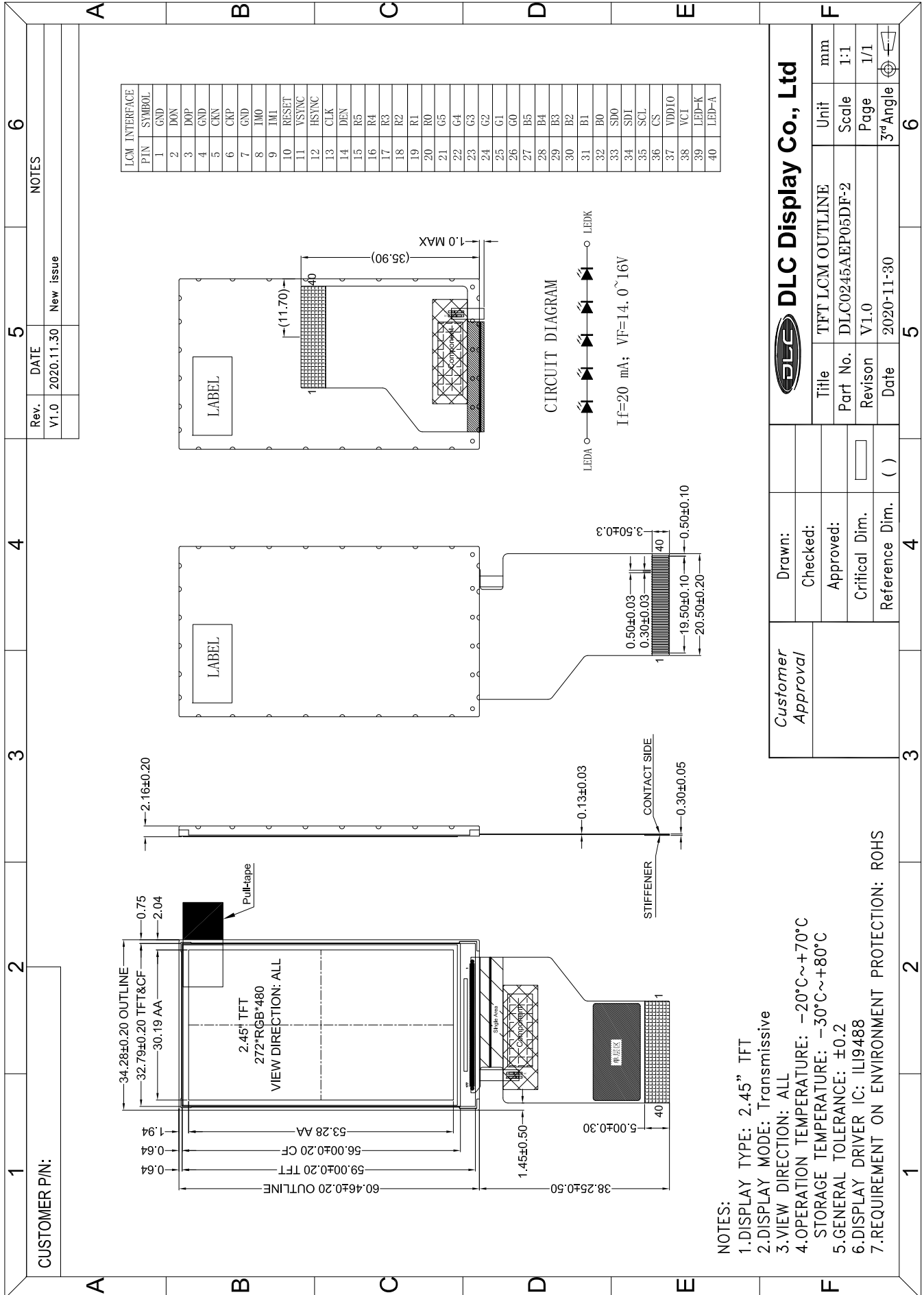


Outline Drawing



NOTES:

- 1.DISPLAY TYPE: 2.45" TFT
- 2.DISPLAY MODE: Transmissive
- 3.VIEW DIRECTION: ALL
- 4.OPERATION TEMPERATURE: -20°C~+70°C
- 5.STORAGE TEMPERATURE: -30°C~+80°C
- 6.DISPLAY DRIVER IC: ILI9488
- 7.REQUIREMENT ON ENVIRONMENT PROTECTION: ROHS

Customer Approval	Drawn:	
	Checked:	
	Approved:	
	Critical Dim.:	
	Reference Dim.:	()
DLC Display Co., Ltd		
Title	TFT LCM OUTLINE	Unit mm
Part No.	DLC0245AEP05DF-2	Scale 1:1
Revision	V1.0	Page 1/1
Date	2020-11-30	3rd Angle